



Elliott Street, Ipswich, £995 Per month

 3  1  1  D

GRACE ESTATE AGENTS are pleased to be offering this Three Bedroom, Mid-Terraced House for Rent. It has been fully re-furbished throughout; with New Kitchen and Bathroom, New Carpets throughout and Freshly Painted.

- Three Bedroom, Mid-Terrace House
- Period Property
- Large Living/Dining Room
- NEW Modern Kitchen
- Utility Lobby
- NEW Modern Bathroom
- Gas Central Heating & Double Glazing
- On-Street Parking



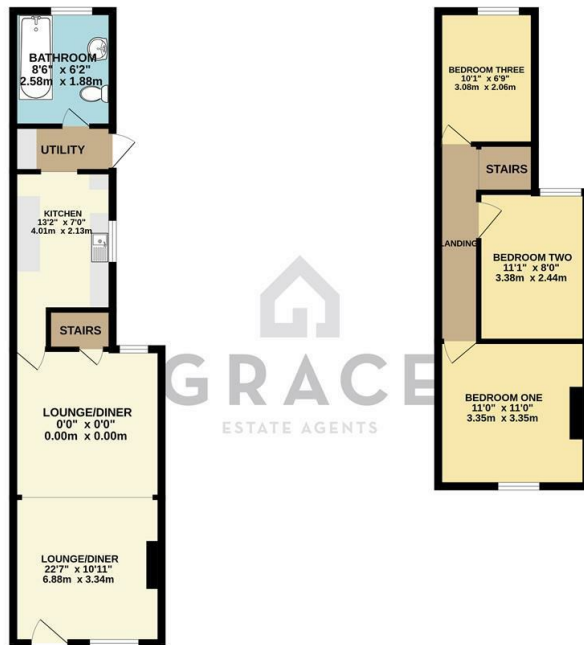
£995 Per month

Viewing

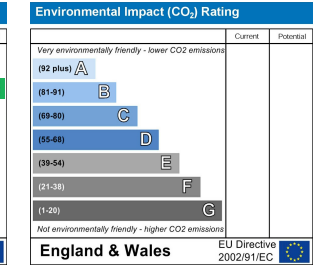
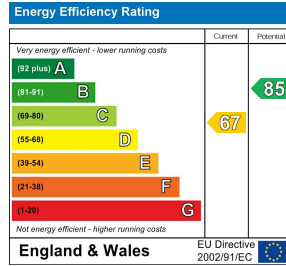
Please contact our Grace Estate Agents Office on 01473 747728 if you wish to arrange a viewing appointment for this property or require further information.

GROUND FLOOR
415 sq ft (38.6 sq m) approx.

1ST FLOOR
207 sq ft (19.4 sq m) approx.



TOTAL FLOOR AREA: 743 sq ft (69.0 sq m) approx.
While every attempt has been made to ensure the accuracy of the floorplan contained herein, measurements of doors, windows, rooms and any other items are approximate and no responsibility is taken for any error, omission or misstatement. This plan is for illustrative purposes only and should be used as such for only prospective purchasers. The services, appliances and equipment shown have not been tested and no guarantee as to their operability or efficiency can be given.
Made with Netplan 02024



These particulars, whilst believed to be accurate are set out as a general outline only for guidance and do not constitute any part of an offer or contract. Intending purchasers should not rely on them as statements of representation of fact, but must satisfy themselves by inspection or otherwise as to their accuracy. No person in this firms employment has the authority to make or give any representation or warranty in respect of the property.